

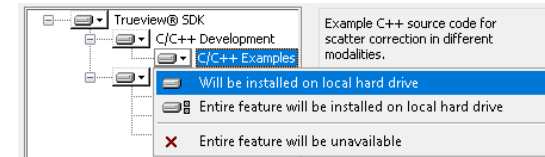
## Installation Requirements

Recommended PC Specification	
<b>CPU</b>	Intel Core i7-4790K @ 4.00GHz
<b>RAM</b>	32.0GB
<b>GPU</b>	NVidia GeForce 1070 GTX 8GB
<b>Video Drivers</b>	Version 461.92 or later.
<b>Free Disk Space</b>	25GB
<b>Operating System</b>	Microsoft Windows 10 professional 64 bit (version 1909)

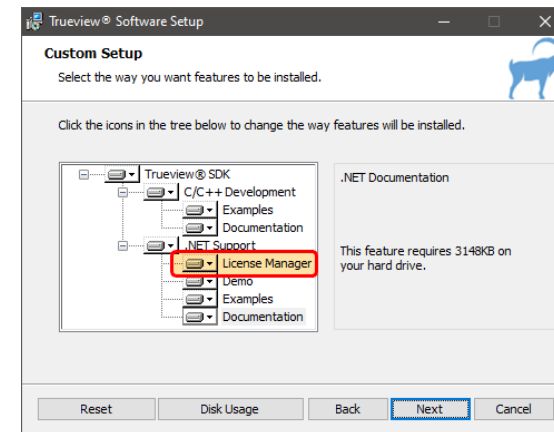
## Installation

- First copy the following files to the PC:
  - Trueview.2.6.0.1052.msi**
- Run the 'Trueview.2.6.0.1052.msi' installer. If the "Windows protected your PC" window is presented, select the "More info" followed by the "Run Anyway" option to proceed.
- When the Trueview Software Setup window is presented, press "Next" to proceed to the license agreement.
- Once the license terms have been accepted, proceed to the setup options by pressing "Next" again.
- The installer allows you to select which features to install on the PC.

- By default, all items will be installed, but the various items can be disabled with the drop-down controls:



Select the options required, including the "License Manager".



- Press "Next" and "Install".



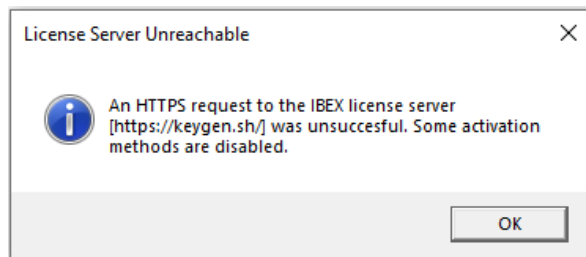
- The installer will now install the Trueview® software and the License Manager application. When the install operation finishes, the system may require a restart to complete the process.

## Installing a license

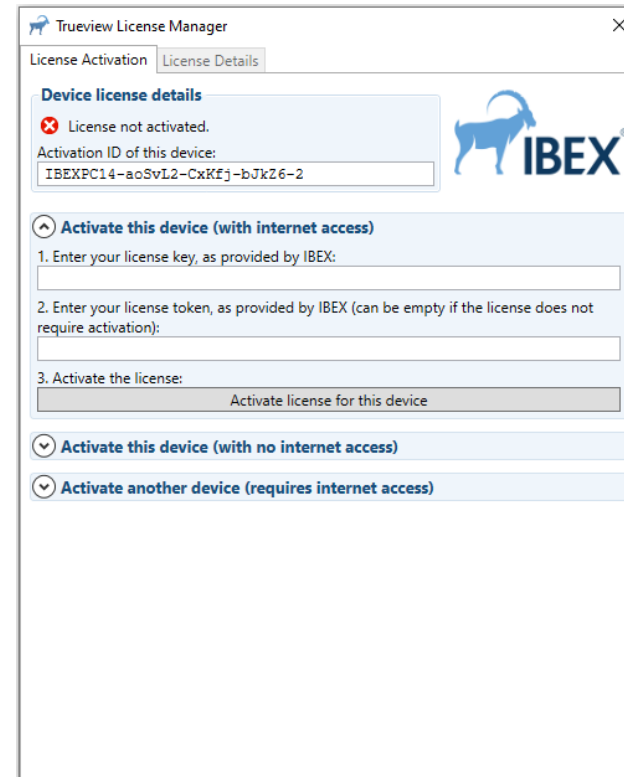
On the machine which will be running the Trueview® software, open the License Manager GUI by double-clicking on the Trueview® License Manager icon on the desktop:



If the machine running the Trueview® software does not have access to the internet, you will be presented with the information below:



When the application starts, the following screen is presented:

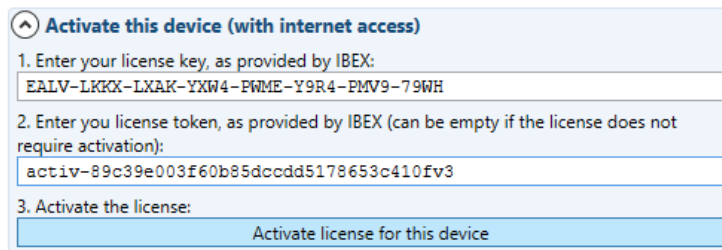


The instructions to follow depend on whether or not the machine has access to the internet. These instructions only have to be followed once, or if the license expires and needs to be renewed.

## With access to the internet

In the License Manager GUI, click on the section called “Activate this device (with internet access)”. It should be already expanded when first opening the License Manager GUI.

Please fill in the “License key” and “License token” boxes with the values provided to you by IBEX. For example:



^ Activate this device (with internet access)

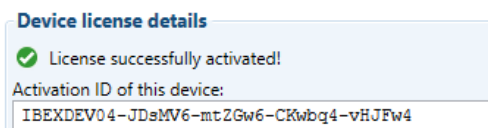
1. Enter your license key, as provided by IBEX:  
EALV-LKKX-LXAK-YXW4-PWME-Y9R4-PMV9-79WH

2. Enter your license token, as provided by IBEX (can be empty if the license does not require activation):  
activ-89c39e003f60b85dcdd5178653c410fv3

3. Activate the license:  
Activate license for this device

Then press the **Activate license for this device** button.

If your machine was authorized to use the Trueview® software, the status of the license should now be “activated”:



Device license details

✔ License successfully activated!

Activation ID of this device:  
IBEXDEV04-JDsMV6-mtZGw6-CKwbq4-vHJFw4



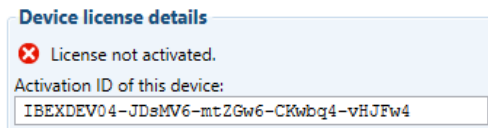
You can now close the License Manager.

## Without access to the internet

If the machine running the Trueview® software does not have access to the internet, you will need to use another machine with internet access to assist with the license activation.

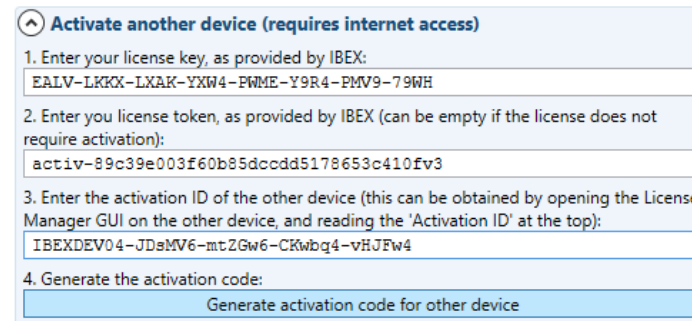
For simplicity, in what follows the machine *without* internet will be called **machine A**, and the machine *with* internet access will be called **machine B**. The License Manager will need to be installed on both machines to follow this procedure.

**1. On machine A**, in the License Manager GUI, note down the “activation ID” of the machine, displayed at the top of the window. For example:



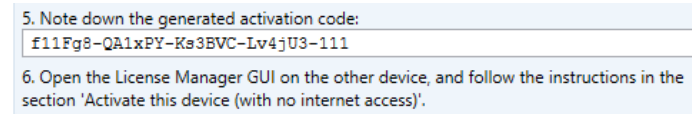
**2. On machine B**, in the License Manager GUI, click on the section called “Activate another device (requires internet access)”.

Please fill in the “License key” and “License token” boxes with the values provided to you by IBEX, and fill in the “Activation ID” box with the activation ID from machine A. For example:



Then press the **Generate activation code for other device** button.

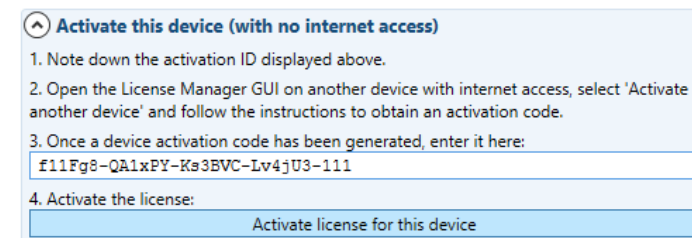
If machine A was authorized to use the Trueview® software, an activation code will appear in the “Activation code” box below:



Note down this activation code.

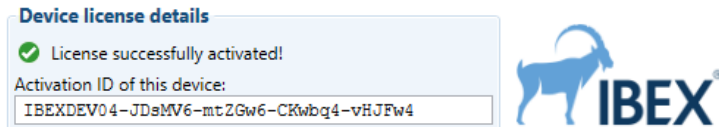
**3. On machine A**, in the License Manager GUI, click on the section called “Activate this device (with no internet access)”.

Please fill in the activation code obtained on machine B, for example:



Finally press the **Activate license for this device** button to activate the license on this machine.

The status of the license should now be “activated”:

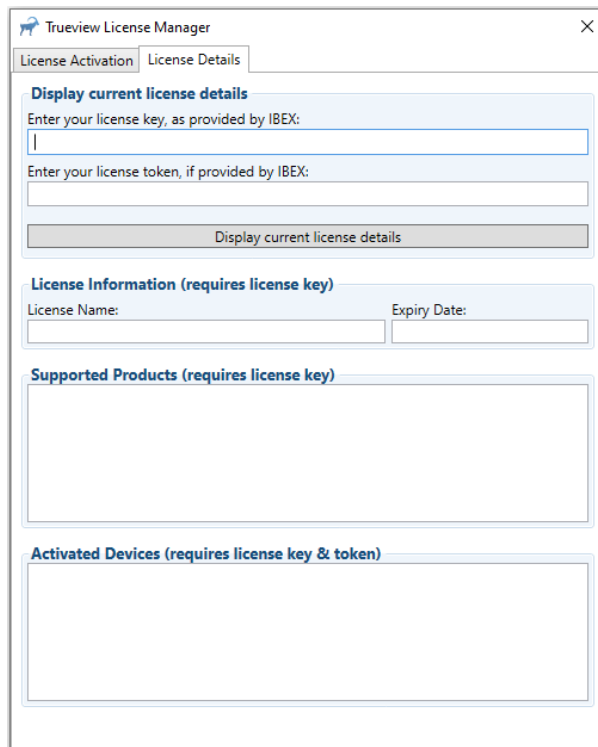


You can now close the License Manager.

## View current license details

Details for the currently installed license can be displayed by selecting the “License Details” tab and entering the relevant license key & token. This tab is inaccessible if there is no license installed, or if there is no internet connection.

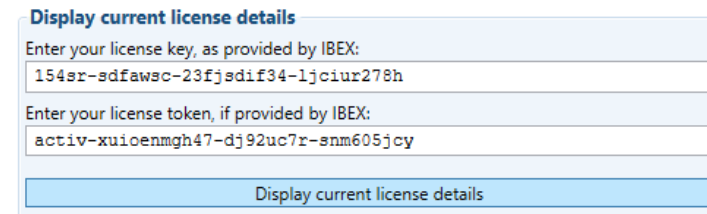
When the “License Details” tab is selected, the following screen is presented:



The screenshot shows the Trueview License Manager application window with the 'License Details' tab selected. It contains the following sections:

- Display current license details:** Two input fields for 'Enter your license key, as provided by IBEX:' and 'Enter your license token, if provided by IBEX:', followed by a 'Display current license details' button.
- License Information (requires license key):** Two input fields for 'License Name:' and 'Expiry Date:'.
- Supported Products (requires license key):** A large empty text area.
- Activated Devices (requires license key & token):** A large empty text area.

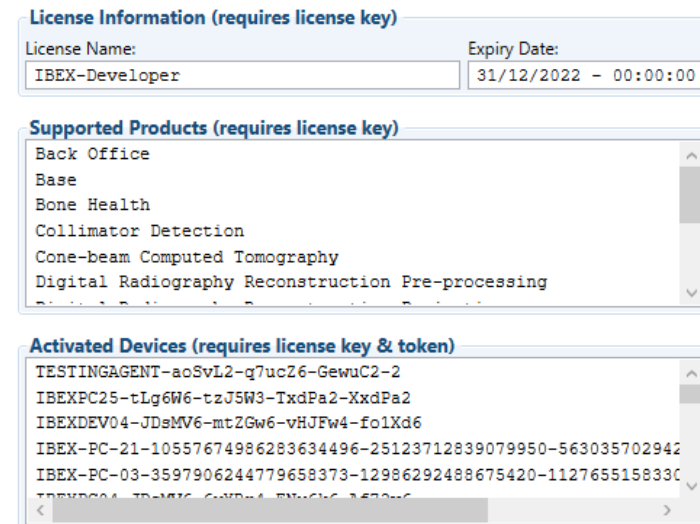
To display license details, please fill in the “License key” and “License token” boxes with the values provided to you by IBEX and select the “Display current license details” button. For example:



This example form shows the following data entered:

- License key: 154sr-sdfawsc-23fj5dif34-ljciur278h
- License token: activ-xuioenmgh47-dj92uc7r-snm605jcy

The license details which can be displayed are license name, expiry date, supported products, and activated devices, as shown below:



This detailed view shows the following information:

- License Information (requires license key):** License Name: IBEX-Developer; Expiry Date: 31/12/2022 - 00:00:00
- Supported Products (requires license key):** Back Office, Base, Bone Health, Collimator Detection, Cone-beam Computed Tomography, Digital Radiography Reconstruction Pre-processing
- Activated Devices (requires license key & token):** TESTINGAGENT-aoSvL2-q7ucZ6-GewuC2-2, IBEXPC25-tLg6W6-tzJ5W3-TxdPa2-XxdPa2, IBEXDEV04-JDsMV6-mtZGw6-vHJFw4-fo1Xd6, IBEX-PC-21-10557674986283634496-25123712839079950-563035702942, IBEX-PC-03-3597906244779658373-12986292488675420-112765515833C