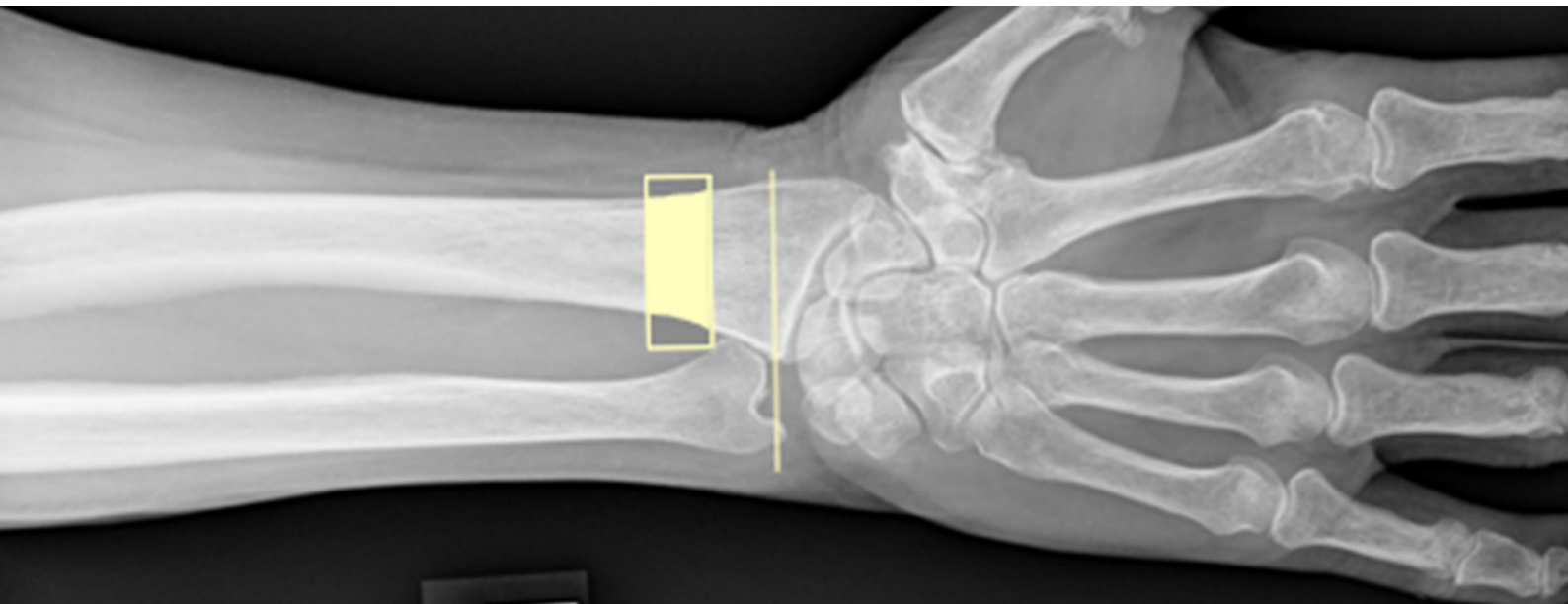




# Bone health diagnosis from routine digital radiography

IBEX BH increases access to osteoporosis diagnosis by returning DXA outputs from standard digital radiographs. With no change required to hardware or imaging protocols IBEX BH enables incidental osteoporosis assessments from routine DR for earlier identification and timely treatment.



Effective and accurate DXA alternative  
aBMD, T score and 10-year fracture risk outputs  
Compatible with all DR systems



## Bone Health Assessment from Standard DR

Fast and readily available access to fracture risk assessment.

Opportunistically screen fracture patients to prevent secondary fractures.

Identifying patients at imminent risk of fracture.

Tackling the osteoporosis treatment backlog with a DXA alternative.

Improving orthopaedic surgical planning with an accessible aBMD value.

## Performance and operation

Fully automated incidental bone health finding from compatible DR scans with no change to exam protocol or hardware.

Published study in BMJ confirms effectiveness for pelvis [1].

## Compliance

IBEX BH will be fully CE certified for clinical use on forearm imaging in late 2022, with updates to extend compatibility to additional anatomies in 2023.

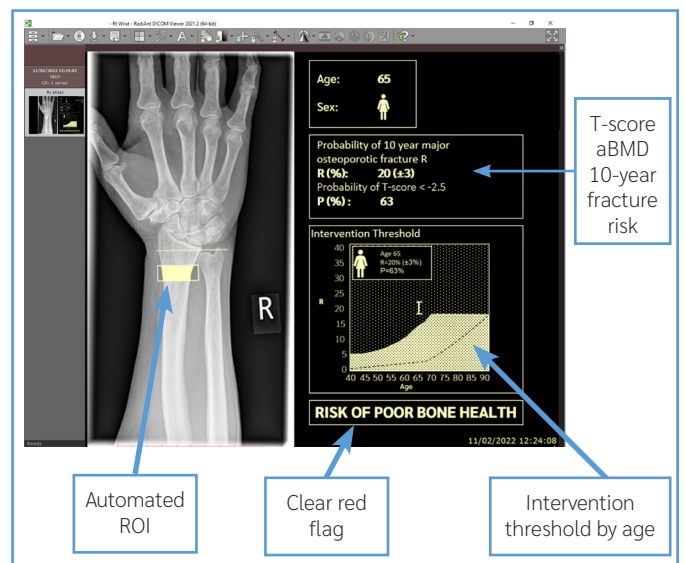
## Integration

The software is provided as an SDK with full instructions and support for integration into the imaging pipeline of your system.

[1] Rangan et al. DOI:10.1136/bmjopen-2021-051021



Standard image acquisition – no change to protocol



Bone Health Product Vision UI - for illustrative purposes only

## About IBEX

IBEX Innovations has a mission to support healthy ageing by increasing access to osteoporosis diagnosis and improving outputs in digital radiography and computed tomography. IBEX X-ray imaging software products are based on the unique IBEX Trueview® technology, which uses a combination of physics modelling and AI to

maximise the value of every X-ray.

IBEX is accredited to ISO 13485:2016 and IBEX products and technology are protected by granted and pending patents worldwide. It is a private company, with a world class team of scientists, engineers, statisticians, and business professionals based in North East England.

